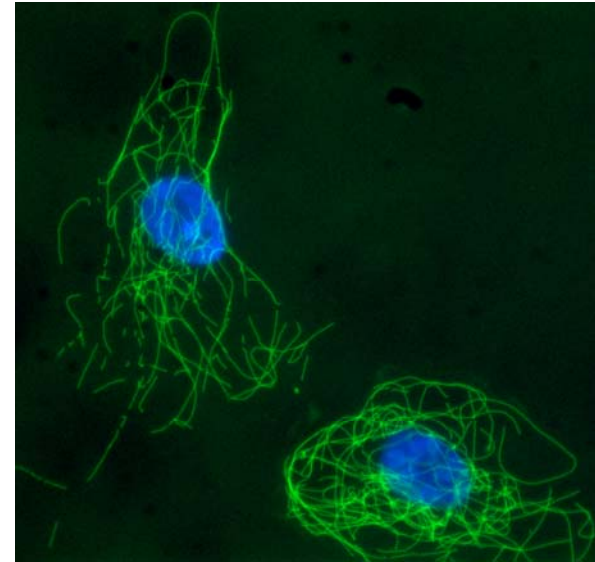
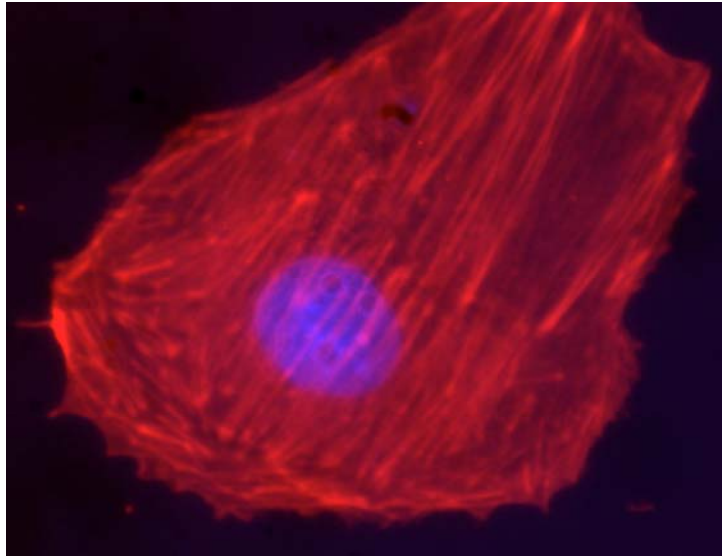
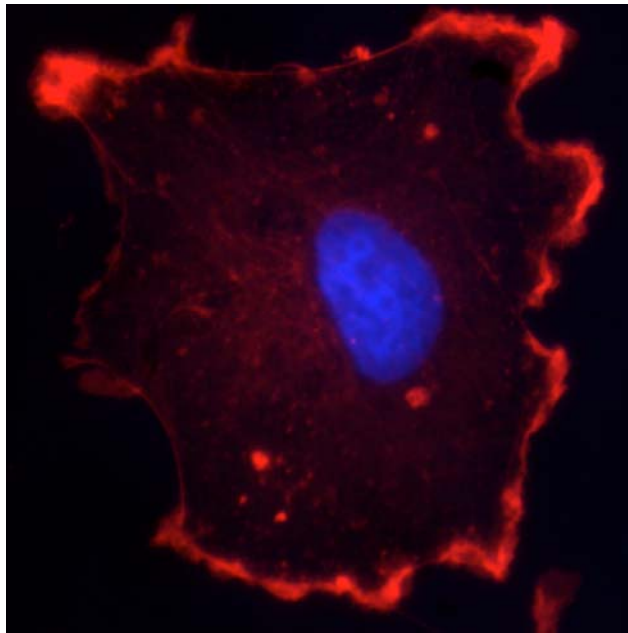


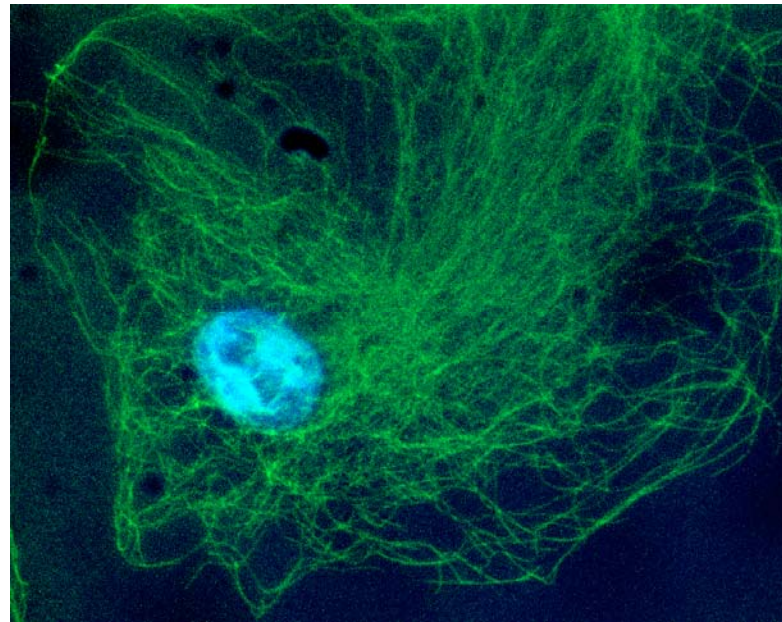
unknown 1



Actin stain for control (top) and drug 1 treated (bottom)



Tubulin stain for control (top) and drug 1 treated (bottom)



unknown 2

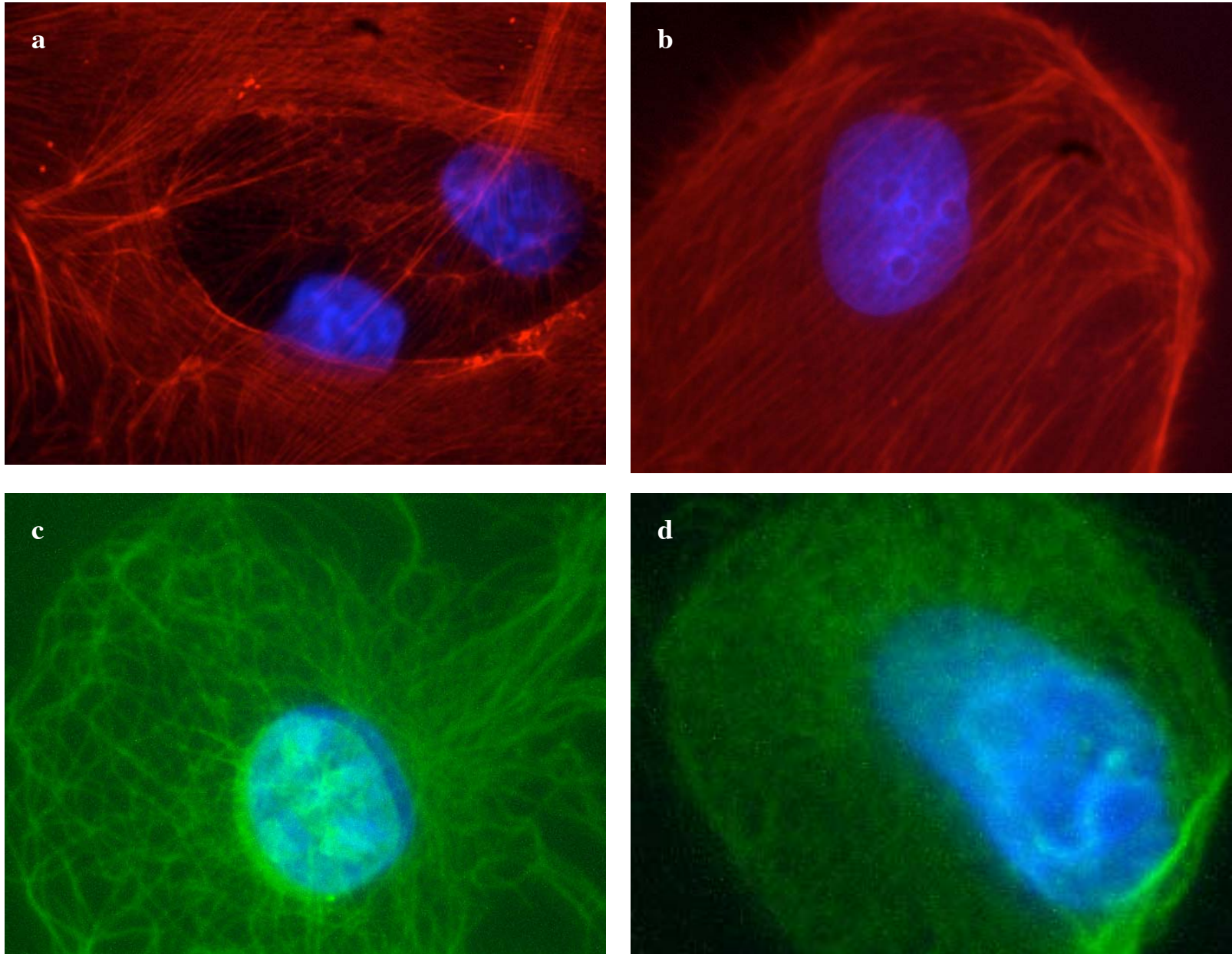
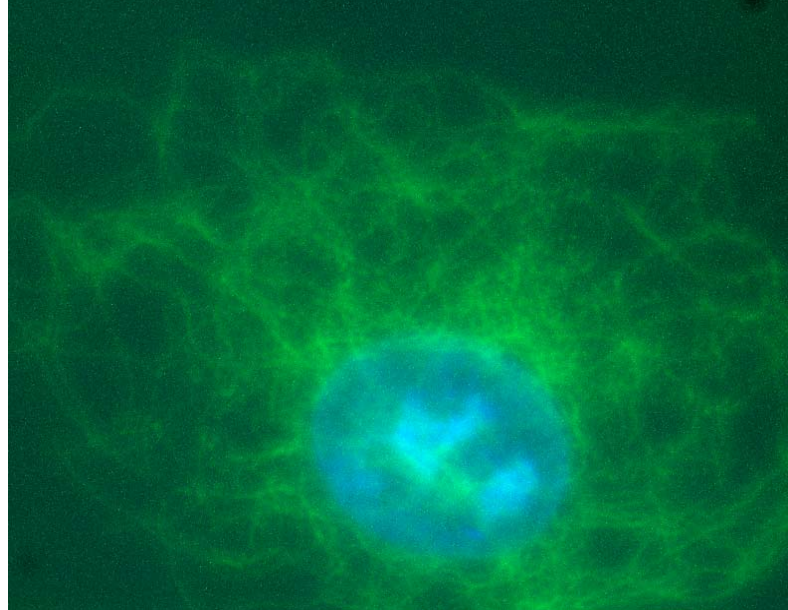
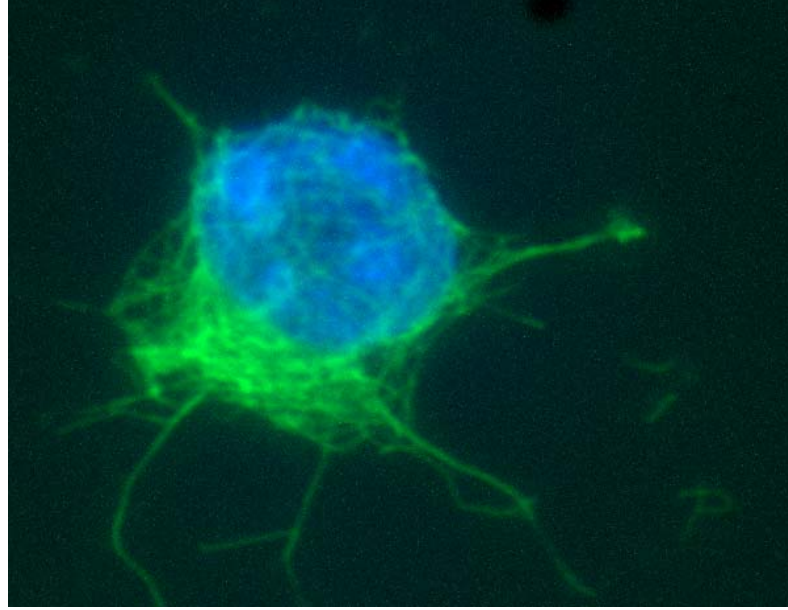
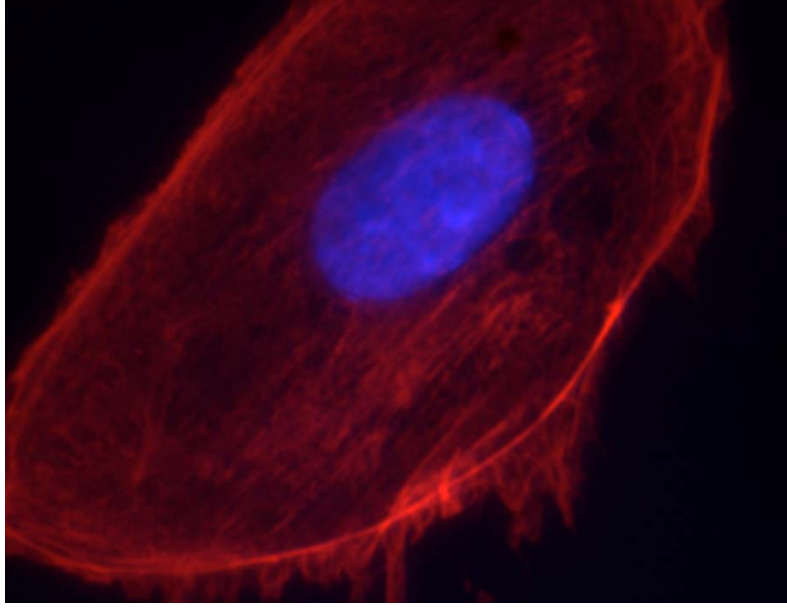
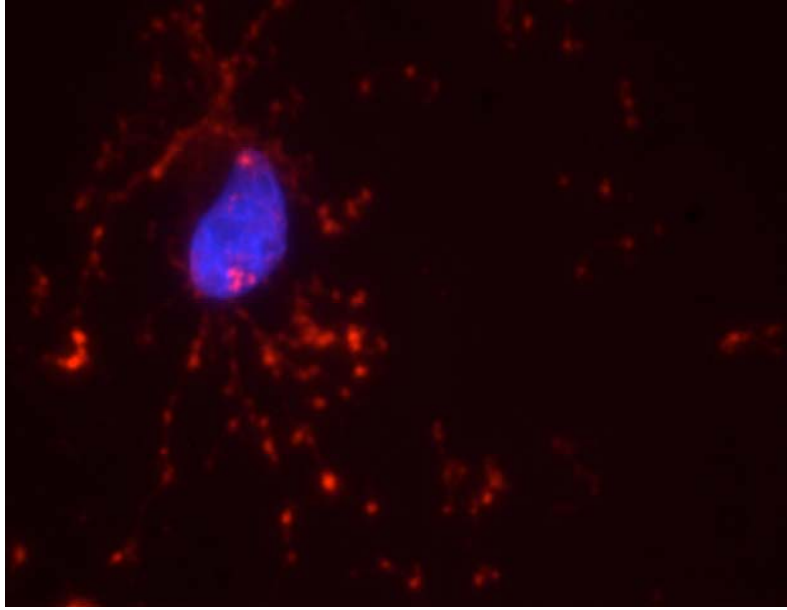


Figure 1. **a.** untreated control cell stained with Rhodamine-phalloidin (red) for actin and Hoechst stain (blue) for DNA; **b.** treated cell stained with Rhodamine-phalloidin (red) for actin and Hoechst stain (DNA) for DNA; **c.** untreated control cell stained with anti-microtubule antibodies (green) and Hoechst stain (blue) for DNA; **d.** treated cell stained with anti-microtubule antibodies (green) and Hoechst stain (blue).



unknown 3

unknown 4

